



**4 Deepslade Close**  
Southgate, Swansea, SA3 2DQ  
Offers Over £475,000

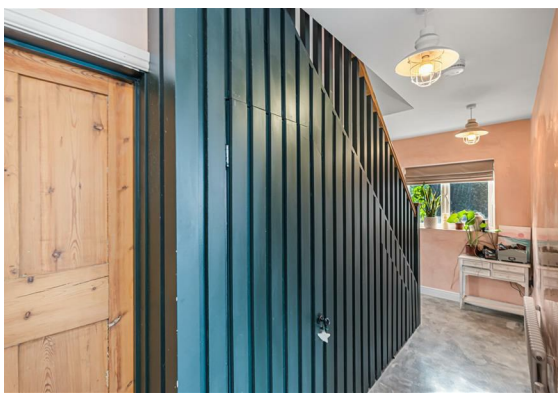


## 4 Deepslade Close Southgate, Swansea, SA3 2DQ

A BEAUTIFULLY RENOVATED & EXTENDED 3 BEDROOM HOME in SOUTHGATE, GOWER. Completely TRANSFORMED into a stylish and highly functional space, combining craftsmanship, creativity & comfort. The ground floor features two inviting reception rooms and an incredible L-shaped open plan kitchen and dining area, the heart of the home featuring both bi-fold & patio doors opening to the garden. With separate utility room and a stunning industrial inspired bathroom. Upstairs, the landing leads to a second bathroom and three stylish bedrooms. Every finish has been chosen with care: contemporary flooring, sleek metro tiling and reclaimed woodwork, including original roof perlings reimagined as shelving. Bespoke polished Venetian plaster and Tadilakt surfaces complete a design that feels both tactile and refined - a home that's as functional as it is beautiful.

Outside, the property sits on a spacious, enclosed plot with a neat front lawn & driveway and a larger rear garden perfect for family life. The patio area flows seamlessly from the dining space, ideal for entertaining, with a covered arbour ready for a hot tub or outdoor kitchen. There's also a GARAGE and an outbuilding, offering versatility for storage or hobbies. Located in the SOUGHT-AFTER VILLAGE OF SOUTHGATE, on the Gower Peninsula, this home enjoys a setting defined by coastal charm and community spirit. With excellent local schools, scenic cliff-top walks and some of the UK's most celebrated beaches on the doorstep, it's a rare blend of design-led living and relaxed coastal lifestyle, perfectly suited to modern family life & just a short commute to Swansea. Call to view now!

**Hallway**  
22'8" x 3'11" (6.92 x 1.21)





### Living Room

13'6" x 12'10" (4.12 x 3.93)

### Second Reception Room

11'5" x 8'9" (3.49 x 2.67)

### Kitchen

24'7" x 6'6" (7.50 x 2.00)

### Dining Area

15'6" x 10'4" (4.73 x 3.16)

### Bathroom One

11'10" x 4'2" (3.61 x 1.28)

### Utility Room

10'2" x 9'0" (3.10 x 2.76)

### Landing

10'7" x 5'11" (3.25 x 1.81)

### Bathroom Two

8'9" x 5'6" (2.67 x 1.70)

### Bedroom One

15'11" x 11'5" (4.87 x 3.48)

### Bedroom Two

10'9" x 10'5" (3.29 x 3.20)

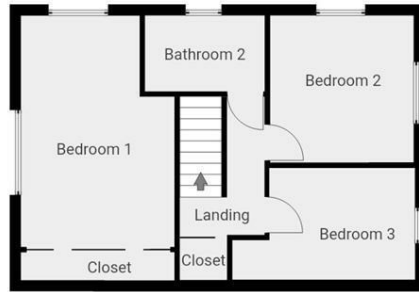
### Bedroom Three

10'7" x 8'2" (3.25 x 2.50)

### External & Location



## Floor Plan



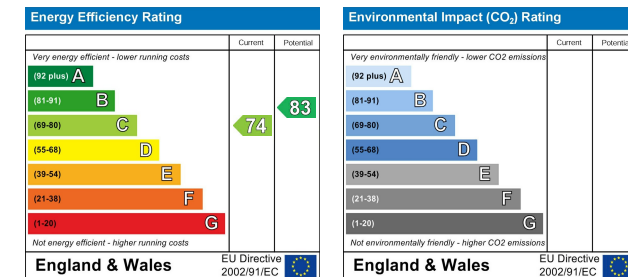
## Viewing

Please contact us on 01792 465822 if you wish to arrange a viewing appointment for this property or require further information.

## Area Map



## Energy Efficiency Graph



Smiths Homes endeavour to maintain accurate depictions of properties in Virtual Tours, Floor Plans and descriptions, however, these are intended only as a guide and purchasers must satisfy themselves by personal inspection.

Unit 4, 270 Cockett Road, Swansea, SA2 0FN  
 T: 01792 465822 E: info@smithslettings.com W: www.smithshomes.com